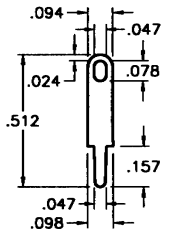
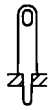


# PC TEST POINT TERMINALS

Designers' Choice

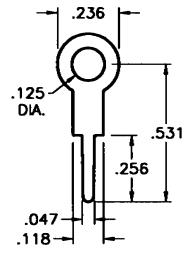


## PC TEST POINTS - LOOP TYPES



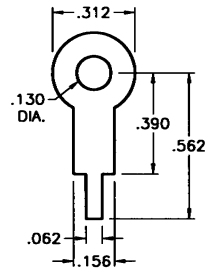
.020 Brass, Tin Plate

CAT. NO. 4953



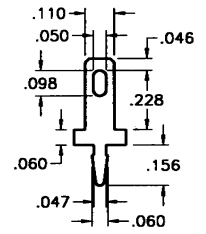
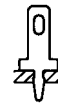
.020 Brass, Tin Plate

CAT. NO. 4954



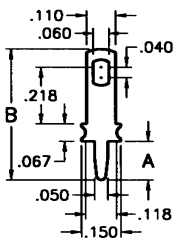
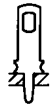
.015 Brass, Tin Plate

CAT. NO. 680



.020 Brass, Tin Plate

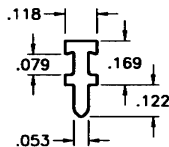
CAT. NO. 1250



.032 Brass, Tin Plate

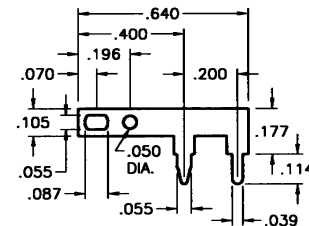
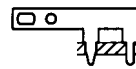
CAT. NO.	A	B
1041	.275	.630
1046	.150	.503

CAT. NO. 1041



.025 Brass, Tin Plate

CAT. NO. 4955



.025 Brass, Tin Plate

CAT. NO. 1045

### CUSTOM TEST POINT TERMINALS

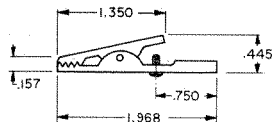
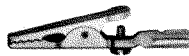
Keystone is fully integrated to meet your total design & production needs.

Manufacturing custom designs & modifications of standard items is our specialty.

Quotations on special stampings furnished promptly upon receipt of sample, sketch, print or CAD drawings.

## ALLIGATOR CLIPS

### LARGE CLIP • SCREW CONNECTION



JAW SPREAD  
.315 max.

CAT. NO. 5048

MATERIAL: Clip: Steel, Nickel Plate

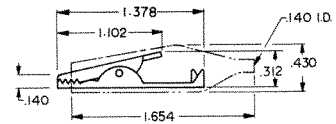
### MEDIUM CLIP • SOLDER CONNECTION WITH STRAIN RELIEF



INSULATED



CAT. NO. 5038 - NON-INSULATED



JAW SPREAD  
.236 max.

CAT. NO.	INSULATOR COLOR
5039	RED
5040	BLACK

MATERIAL: Clip: Steel, Nickel Plate Insulator: Vinyl

### SMALL CLIP • SOLDER CONNECTION WITH STRAIN RELIEF

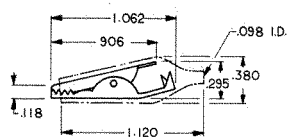


INSULATED



CAT. NO. 5033 - NON-INSULATED

CAT. NO.	INSULATOR COLOR
5034	RED
5035	BLACK
5036	GREEN
5037	YELLOW



JAW SPREAD  
.236 max.

MATERIAL: Clip: Steel, Nickel Plate Insulator: Vinyl

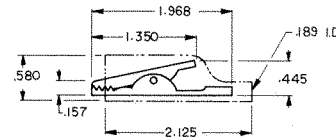
### LARGE CLIP • SOLDER CONNECTION (BARREL ACCEPTS WIRE OR STANDARD BANANA PLUGS)



INSULATED



CAT. NO. 5044 - NON-INSULATED



JAW SPREAD  
.315 max.

CAT. NO.	INSULATOR COLOR
5045	RED
5046	BLACK

MATERIAL: Clip: Steel, Nickel Plate Insulator: Vinyl